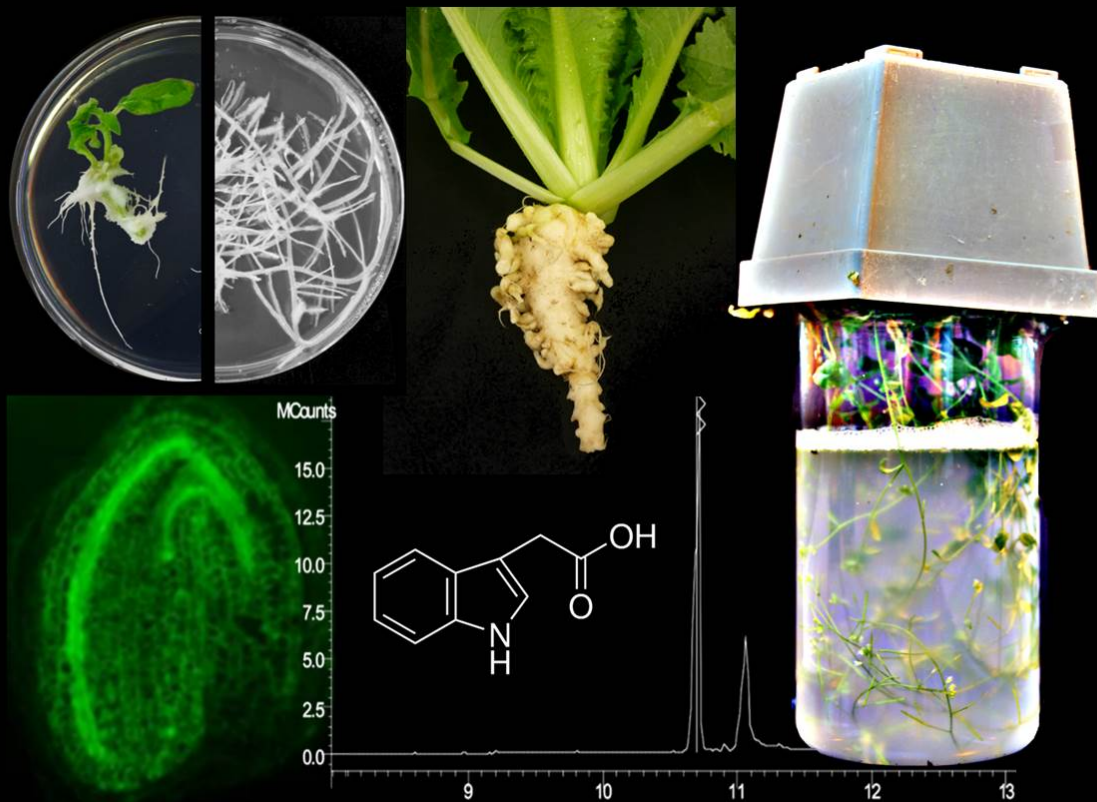


29. Conference

Molecular Biology of Plants

23. – 26. February 2016
Dabringhausen



Organisation

Jutta Ludwig-Müller (Dresden)
Andreas Schaller (Stuttgart)
Andreas Weber (Düsseldorf)

Tuesday, 23. February 2016

- 16:00 **Opening and Welcome address**
Jutta Ludwig-Müller (*Dresden*)
- 16:10 – 17:00 **Opening lecture**
The endodermis - how to build a selective and protective barrier to the soil
Niko Geldner (*Lausanne*)

Session 1: Abiotic stress

Chair: Jörg Kudla

- 17:00 – 17:20 **N-terminal protein acetylation - An emerging cellular surveillance mechanism with broad impact**
Markus Wirtz (*Heidelberg*)
- 17:20 – 17:35 **ZINC FINGER OF ARABIDOPSIS THALIANA12 (ZAT12) interacts with FER-LIKE IRON DEFICIENCY-INDUCED TRANSCRIPTION FACTOR (FIT) linking iron deficiency and oxidative stress responses**
Tzvetina Brumbarova (*Düsseldorf*)
- 17:35 – 17:50 ● **Role of the PsbS Protein in *Chlamydomonas reinhardtii***
Petra Redekop (*Düsseldorf*)
- 17:50 – 18:05 ● **tAPx as memory component of stress: from plastid sensing to changed ROS responses in chilling stress**
Jörn van Buer (*Berlin*)
- 18:05 – 19:25 **Dinner**

Session 2: Gene expression

Chair: Dorothee Staiger

- 19:30 – 19:50 **Nonsense-mediated decay is under species-specific feedback control and inhibited by abiotic stress in plants**
Andreas Wachter (*Tübingen*)
- 19:50 – 20:05 ● **Phenotypic and molecular analysis of grapevine cluster architecture**
Robert Richter (*Gießen*)
- 20:05 – 20:20 **Towards an RNAi-based control of plant diseases**
Aline Koch (*Gießen*)
- 20:20 – 20:35 **Assembly and localization of mRNPs during early embryogenesis in Arabidopsis**
Andrea Bleckmann (*Regensburg*)

Wednesday, 24. February 2016

from 07:00 **Breakfast**

Session 3: Signal transduction

Chair: Marcel Quint

- 08:30 – 08:50 **Protein ubiquitination in light signal transduction**
Ute Höcker (*Köln*)
- 08:50 – 09:05 ● **Down-Regulation of Immune Signalling by a MAP-Kinase-triggered Phosphoswitch Activating the E3 ligase PUB22**
Giulia Furlan (*Halle*)
- 09:05 – 09:20 ● **Integration of Calcium and ABA signaling: In vivo reconstitution of an essential Calcium and ABA regulated transcriptional module**
Kai Edel (*Münster*)
- 09:20 – 09:40 **Auxin binding protein 1 is still the receptor for fast auxin responses**
Bianka Steffens (*Marburg*)
- 09:40 – 10:00 **Endoplasmic reticulum: Where nucleotide sugar transport meets cytokinin control mechanisms**
Tomas Werner (*Berlin*)
- 10:00 – 10:30 **Coffee Break**

Session 4: Molecular Physiology

Chair: Ulf-Ingo Flügge

- 10:30 – 10:45 ● **Characterisation of GRXS15: a key player in FeS-protein maturation**
Anna Moseler (*Bonn*)
- 10:45 – 11:00 **2-phosphoglycolate regulates carbon fixation and storage**
Stefan Timm (*Rostock*)
- 11:00 – 11:15 ● **ABB1- a novel regulator of PhyB dark reversion**
Beatrix Enderle (*Freiburg*)
- 11:15 – 11:30 ● **The Phosphoserine Pathway - an Integral component of the metabolic network in Arabidopsis roots**
Ruben Maximillian Benstein (*Köln*)
- 11:30 – 11:45 **Regulation of Ammoniumtransport in *Arabidopsis thaliana***
Benjamin Neuhäuser (*Hohenheim*)
- 11:45 – 12:00 ● **Metalloido-porins are essential molecular players in boron transport of *Brassica* crops**
Till Arvid Diehn (*Gatersleben*)
- 12:00 – 13:45 **Lunch**

Poster session I

- 14:00 – 16:30 **Poster presentations & Coffee**
14:00 – 14:50 poster numbers ending in a
14:50 – 15:40 poster numbers ending in b
15:40 – 16:30 poster numbers ending in c

Session 5: Organelles

Chair: Karin Schumacher

- 16.30 – 16.50 **Nanobody-mediated assembly of sensor molecules for compartment-specific analysis of protein-protein interactions between vacuolar sorting receptors and ligands via FRET/FLIM in vivo**
Peter Pimpl (*Tübingen*)
- 16:50 - 17:05● **A novel regulatory element in the transit peptide controls chloroplast specific subcellular targeting in the single-cell C4 species *Bienertia sinuspersici***
Diana Wimmer (*Hannover*)
- 17:05 – 17:20 **Regulation of light harvesting systems studied by steady state and time resolved fluorescence in proteoliposomes**
Lars Dietzel (*Frankfurt*)
- 17:20 – 17:35● **Nuclear control of chloroplast biogenesis**
Monique Liebers (*Grenoble*)
- 17:35 – 17:50● **Towards the operational “Thiol-Switch-Ome” of plant mitochondria**
Thomas Nietzel (*Bonn*)
- 17:50 – 18:05 **PUX10 - a lipid droplet associated scaffold protein**
Till Ischebeck (*Göttingen*)
- 18:05 – 19:25 **Dinner**

Session 6: Biotic interactions I

Chair: Antje von Schaewen

- 19:30 – 19:45 **Modulation of cysteine protease signaling as key process in biotrophic plant-microbe interactions**
Gunther Döhlemann (*Köln*)
- 19:45 – 20:00 **PLANTS vs. PLANTS: How tomato senses the plant parasite *Cuscuta reflexa***
Markus Albert (*Tübingen*)
- 20:00 – 20:15 ● **Functional and structural conservation of MAMP-responsive cis-regulatory sequences between mouse and Arabidopsis**
Konstantin Kanofsky (*Braunschweig*)
- 20:15 – 20:30 **Identification of novel reference genes for analysis of infected tomato leaves**
Heike Prochaska (*Halle*)
- 20:30 – 20:45 **The plant's transcriptome “forgets” a reliable stress signal when it ceases, but “remembers” an unspecific past stress when exposed to herbivory**
Jana Oberländer (*Berlin*)

Thursday, 25. February 2016

from 07:00 Breakfast

Session 7: Biochemistry I

Chair: Ralf Mendel

- 08:30 – 08:50 **Functional and biochemical analysis of the α -terpineol to 1,8-cineole cyclization reaction of the “cineol cassette” monoterpene synthases of *Nicotiana* species**
Birgit Piechulla (*Rostock*)
- 08:50 – 09:05 ● **Characterization of the plant like Cryptochrome CryP in *Phaeodactylum tricornutum***
Sarah König (*Frankfurt*)
- 09:05 – 09:20 ● **Substrate thiophosphorylation by Arabidopsis mitogen-activated protein kinases**
Franz Leissing (*Aachen*)
- 09:20 – 09:35 ● **Propeptide-mediated control of protease activity and zymogen maturation in tomato subtilase SBT3**
Michael Meyer (*Hohenheim*)
- 09:35 – 09:55 **Plant N-end rule - losing proteins in plants or understanding N-terminal targeting for proteostasis**
Nico Dissmeyer (*Halle*)
- 10:00 – 10:30 **Coffee Break**

Session 8: Development

Chair: Rüdiger Simon

- 10:30 – 10:50 **No sex required - a master regulator for apogamy**
Ralf Reski (*Freiburg*)
- 10:50 – 11:10 **The dynamics of plant stem cell regulation on a microscopic scale**
Yvonne Stahl (*Düsseldorf*)
- 11:10 – 11:25 ● **Genetic control of root meristem development in barley (*Hordeum vulgare*)**
Gwendolyn Kirschner (*Düsseldorf*)
- 11:25 – 11:40 ● **Cortical microtubule dynamics during lateral root primordia development**
Amaya Vilches Barro (*Heidelberg*)
- 11:40 – 11:55 **Cryptic genetic variation in the paternal regulation of seed development**
Nuno Pires (*Zürich*)
- 11:55 – 12:15 **No U-turn: (Why) does evolution favour embryogenesis?**
Stefan Rensing (*Marburg*)
- 12:15 – 13:45 **Lunch**

Poster session II

- 14:00 – 16:45 **Poster presentations & Coffee**
14:00 – 14:55 poster numbers ending in b
14:50 – 15:50 poster numbers ending in c
15:40 – 16:45 poster numbers ending in a

Session 9: Biochemistry II

Chair: Danja Schünemann

- 16:45 – 17:00 **Are the cytosolic malate dehydrogenase isoforms from Arabidopsis differentially regulated?**
Jennifer Selinski (*Osnabrück*)
- 17:00 – 17:15 **Methylglyoxal Detoxification in Arabidopsis - The Chloroplast harbours a Full Glyoxalase System**
Jessica Schmitz (*Düsseldorf*)
- 17:15 – 17:30 **Blocking diterpene synthesis in tobacco trichomes provides new insights into the homeostasis of isoprenoid precursor pathways**
Kathleen Rothe (*Halle*)
- 17:30 – 17:45 **Internal nitrogen recycling in Arabidopsis - Biochemistry and Molecular Mechanisms of Arginase**
Gudrun Winter (*Konstanz*)
- 18:00 **Reinhold-von-Sengbusch Lecture**
The 4 dimensions of plant secondary metabolism: The role of metabolomics
Robert Verpoorte (*Leiden*)
- ca. 19:15 **Conference Dinner**
- ca. 21:00 **Bar, Skittles, Disco, Party!**

Friday, 26. February 2015

from 07:30 **Breakfast**

Session 10: Biotic interactions II

Chair: Bettina Hause

- 09:00 – 09:15 **Identification and characterization of Arabidopsis G3BPs in formation of plant stress granules**
Björn Krenz (*Erlangen*)
- 09:15 – 09:30 **Nucleoporin-regulated defense signaling to a necrotrophic pathogen**
Marcel Wiermer (*Göttingen*)
- 09:30 – 09:45 **Off the beaten track: A novel smut fungus infects *Arabidopsis thaliana***
Vera Göhre (*Düsseldorf*)
- 09:45 – 10:05 **Synthetic elicitors as molecular probes to dissect immunity and hormesis in plants**
Thomas Eulgem (*Riverside, California*)
- 10:05 – 10:30 **Coffee Break**
- 10:30 – 11:00 **Reinhold von Sengbusch Poster and Talk Awards**
Presented by the von Sengbusch family

Short presentation of the winning posters
- 11:00 – 11:50 **Farewell Lecture**
Precursor processing and peptide hormone maturation by subtilases
Andreas Schaller (*Hohenheim*)
- 11:50 **Closing remarks and Farewell**
Andreas Weber (*Düsseldorf*)
- 12:00 **Lunch and Departure**

Posters

Abiotic Stress

- 1a • The rice glycerol-3-phosphate acyltransferase 5 is a gene of suberin synthesis**
Katharina Markus, Friedrich Waßmann, Lukas Schreiber, Rochus Franke
(Bonn)
- 2b • Light Regulation of the Zeaxanthin Epoxidase**
Kathrin Gerstendörfer
(Düsseldorf)
- 3c • First Insights into cryostress induced stress responses in Arabidopsis shoot tips**
Johanna Stock, Antonios Petridis, Joachim Keller, Hans-Peter Mock
(Gatersleben)
- 4a • Investigating the regulation of thylakoid K⁺/H⁺ antiport**
Viviana Correa Galvis, Ute Ambruster
(Golm)
- 5b • Role of ERF71/HRE2 in seedling adaptation to low oxygen stress**
Emese Derzso, Margret Sauter
(Kiel)
- 6c • Alternative splicing of tomato HsfA2 and its association with natural variation in heat stress response and thermotolerance**
Yangjie Hu, Sascha Röth, Klaus-Dieter Scharf, Enrico Schleiff, Sotirios Fragkostefanakis
(Frankfurt)
- 7a • Candidate gene based association study of frost tolerance in wheat (*Triticum aestivum* L.)**
Steve Babben, Dragan Perovic, Michael Koch, Yuriy Chesnokov, Tatyana Pshenichnikova, Jörg Schondelmaier, Fernando Alberto Arana-Ceballos, Andreas Börner, Frank Ordon
(Halle-Wittenberg)
- 8b • Time-resolved transcript, protein, metabolite and ion profiling of Arabidopsis roots in simulated and real microgravity**
Oliver Schüler, Matthias Nagler, Thomas Nägele, Hamed Al Ameen, Anika Witten, Martin Schaefer, Klaus Palme, Ruth Hemmersbach, Wolfram Weckwerth, Maik Böhmer
(Münster)

- 9c **The role of the large cytoplasmic loop of IRON-REGULATED TRANSPORTER1 in the regulation of Arabidopsis iron acquisition**
Rumen Ivanov
(Düsseldorf)
- 10a **Transcriptional and post-transcriptional regulation of heat stress response and thermotolerance in tomato**
Sotirios Fragkostefanakis, Yangjie Hu, Anida Mesihovic, Klaus-Dieter Scharf, Enrico Schleiff
(Frankfurt)
- 11b **Cloning of the chilling tolerance locus ke-1 in maize**
Karin Ernst, Sandra Kirchner, Elena Pestsowa, Daniela Scheuermann, Thomas Presterl, Milena Ouzunova, Peter Westhoff
(Düsseldorf)
- 12c • **The transport protein MNX plays a major role in resistance to manganese and high light stress in the cyanobacterium *Synechocystis* sp. PCC 6803**
Fabian Brandenburg, Nir Keren, Hanan Schoffman, Ute Krämer, Andreas Weber, Marion Eisenhut
(Düsseldorf)

Gene Expression

- 13a • **Sesquiterpenes produced in roots of *Medicago truncatula* play a role in defense against *Aphanomyces euteiches***
Heena Yadav, Dorothée Klemann, Susanne Baldermann, Andrea Porzel, Bettina Hause
(Halle-Wittenberg)
- 14b • **Establishing Homologous Recombination in the Diatom *Phaeodactylum tricornutum***
Max Angstenberger, Ozan Aktas, Claudia Büchel
(Frankfurt)
- 15c • **Unraveling the transcriptional regulation of Tryptophan-derived antimicrobial compounds**
Jörn Herfert, Nora Wehner, Wolfgang Dröge-Laser
(Würzburg)

16a PWO1: a putative missing link between nuclear positioning and gene repression

Pawel Mikulski, Mareike Hohenstatt, Sara Farrona, Daniel Schubert
(Berlin)

17b • A closer look at ecotypes of the moss *Physcomitrella patens*

Manuel Hiss, Rabea Meyberg, Fabian Haas, Pierre-Francois Perroud, Mareike Schallenberg-Rüdinger, Lucas Schneider, Kristian Ullrich, Jens Westermann, Stefan A. Rensing
(Marburg)

Signal Transduction

18c • Glutamate receptor-like channels in plants: amino acid profiling and subunit interactions

Thi Hong Thanh Lu, Daniel Tapken, Michael Hollmann
(Bochum)

19a Signaling events after CLE40 perception in the root meristem

Maïke Breiden, Rüdiger Simon
(Düsseldorf)

20b • Localization, intracellular dynamics and cellular function of the *Arabidopsis thaliana* histidine kinase AHK1

Rebecca Dautel, Katharina Caesar, Waltraud X. Schulze, Michael Hothorn, Klaus Harter
(Tübingen)

21c • Molecular link between light and jasmonate signalling

Michael Vögtlin, David Sheerin, Andreas Hiltbrunner
(Freiburg)

22a • Synergistic activation of a NADPH oxidase via Phosphorylation by a CPK and a CIPK

Philipp Köster, Katharina Hake, Lukas Wallrad, Kenji Hashimoto, Tina Romeis, Jörg Kudla
(Münster)

23b The elucidation of the early molecular events in sulfate sensing

Veli Vural Uslu, Markus Wirtz, Guido Grossmann, Rüdiger Hell
(Heidelberg)

24c Exocyst subunit is controlled by MAP Kinase to modulate the immune response

Marco Trujillo, Ooi-Kock Teh
(Halle (Saale))

25a Identification of cognate pairs of CLEL propeptides and processing subtilases in *Arabidopsis thaliana*

Nils Stührwohldt, Andreas Schaller
(Hohenheim)

Development

26b Identifying the Signaling Network that regulate Root Stem Cell Homeostasis

Barbara Berckmans
(Düsseldorf)

27c • Phytosulfokine signaling improves osmotic stress resistance in Arabidopsis

Martina Schönhof, Margret Sauter
(Kiel)

28a • The FLOWER IN FLOWER mutant - characterisation of a new strong lfy-allele

Anne Mohrholz, Üner Kolukisaoglu, Korbinian Schneeberger, Klaus Harter
(Tübingen)

29b • Phylotranscriptomic and -proteomic profiling of the life cycle of *Arabidopsis thaliana* and *Capsella rubella*

Philipp Janitza, Hajk-Georg Drost, Alexander Gabel, Julia Bellstädt, Ivo Große, Marcel Quint
(Halle-Wittenberg)

30c Transcriptome analysis leads to the identification of candidate genes regulating cluster architecture in grapevine

Susanne Rossmann, Robert Richter, Reinhard Töpfer, Eva-Zyprian, Klaus Theres
(Köln)

31a What can moss teach us about DEK1 protein function in land plants?

Pierre-François Perroud, Wenche Johansen, Viktor Demko, Ako E. Ako, Stefan Rensing, Odd-Arne Olsen
(Marburg)

Organelles

- 32b • Novel functions of FKBP-type immunophilins in photosynthetic acclimation**
Ina Burghardt, Antje Kangowski, Michaela Bartusel, Lars Dietzel
(Frankfurt)
- 33c • The COX2 expression in *Arabidopsis thaliana* is affected by the PPR protein DWEORG1**
Stefanie Grüttner, Frank Kempken
(Kiel)
- 34a • Flowering time in *Arabidopsis thaliana* is affected by a mitochondrial PPR protein**
Hossein Emami
(Kiel)
- 35b Identification of a thylakoid manganese transporter in *Arabidopsis thaliana***
Marion Eisenhut, Peter Jahns, Andreas P.M. Weber
(Düsseldorf)
- 36c Chloroplast mediated speciation factors in Evening Primroses**
Stephan Greiner
(Golm)

Biotic Interactions

- 37a • HvRBOH F2 modulates susceptibility to Bgh in a leaf-age dependent manner and has a function in cell death regulation**
Denise Pereira Torres, Indira Priyadarshini Pathuri, Götz Hensel, Jochen Kumlehn, Ralph Hückelhoven, Reinhard K. Proels
(München)
- 38b • The Regulation of Expansins in *Arabidopsis thaliana***
Sabine Marschollek, Jutta Ludwig-Müller
(Dresden)
- 39c • A phytoalexin for controlling Asian soybean rust**
Sebastian Beyer, Holger Schultheiss, Jochem Gätgens, Marco Oldiges, Caspar Langenbach, Uwe Conrath
(Aachen)

- 40a • ROP signaling in the interaction of barley and the barley powdery mildew**
Christopher McCollum, Ralph Hückelhoven
(München)
- 41b • The EDS1 immune signaling node in solanaceous plants**
Johannes Gantner, Raphael Guérois, Johannes Stuttmann
(Halle-Wittenberg)
- 42c From Pathogen Effector to Plant Immune Function**
Jens Steinbrenner, Paul Birch, Karl-Heinz Kogel, Pascal Braun, Jim Beynon
(Giessen)
- 43a Synthetic (1,3)-beta-glucan receptor confers resistance to fungal infection in Arabidopsis**
Jasmin Koch, Annemarie Glöckner, Christian Voigt
(Hamburg)
- 44b • Biological significance of glucosinolate break-down products on soil microbiome**
Meike Siebers, Stephan Thies, Filip Kovacic, Karl-Erich Jaeger, Peter Dörmann, Thomas Rohr, Marina Ventura, Margot Schulz
(Bonn)
- 45c • Regulation of plant carbon transport mechanisms during AM symbiosis under carbon limiting conditions**
Stefanie Wegener, Sascha Offermann
(Hannover)
- 46a • Genetic characterisation of *Candidatus Phytoplasma mali***
Sabine Öttl, Katrin Janik, Katja Schlink
(Laimburg)
- 47b • BiFuProts - Bifunctional proteins for plant protection**
Patrick Schwinges
(Aachen)
- 48c • Growth and defense: a solvable predicament?**
Alexander Lubahn, Tobias Lortzing, Anke Steppuhn, Claus-Peter Witte, Marco Herde
(Hannover)

Biochemistry

- 49a **Role of transport proteins in connecting peroxisomes to the cellular metabolism**
Nicole Linka, Björn Hielscher, Lennart Charton, Jan Wiese, Martin Schroers, Sarah Kessel-Vigelius
(Düsseldorf)
- 50b • **Acid lipases in the degradation of lipid droplets**
Anna Müller, Ivo Feussner, Till Ischebeck
(Göttingen)
- 51c • **Ribokinase - Sugar recycling from nucleotide catabolism in *Arabidopsis thaliana***
Rebekka Schröder, Claus-Peter Witte
(Hannover)
- 52a **The novel cryptochrome CryP in the diatom *Phaeodactylum tricorutum***
Deyan Radev, Sarah König, Claudia Büchel
(Frankfurt)
- 53b **Strigolactones, Biosynthesis and Applications**
Salim Al-Babili
(Thuwal)

Molecular Physiology

- 54c • **How is copper homeostasis integrated with plant development?**
Anna Schulten, Kristin Müller, Maria Bernal, Ute Krämer
(Bochum)
- 55a • **The *opi3* mutant identifies novel roles for brassinosteroids in temperature signaling**
Carla Ibanez, Carolin Delker, Marcel Quint
(Halle-Wittenberg)
- 56b • **Effect of the mutation of CP26 and Psb27 on the regulation of Photosystem II**
Hannah Petzold, Lars Dietzel
(Frankfurt)

- 57c • **A new model for purine nucleotide catabolism: moving from a complex network towards a linear metabolic pathway**
Chiara Baccolini, Kathleen Dahncke, Claus-Peter Witte
(Hannover)
- 58a **The Import(ance) of Plant Mitochondrial Calcium**
Stephan Wagner, Philippe Fuchs, Alex Costa, Markus Schwarzländer
(Bonn)
- 59b • **The localization and function of the photosystem II assembly factor Psb28 in *Arabidopsis thaliana***
Falko Flügge, Veronika Benz, Lars Dietzel
(Frankfurt)
- 60c • **DFG-PREDICT: Omics-based models for prediction of hybrid performance in *Brassica napus* (oilseed rape)**
Dominic Knoch, Amine Abbadi, Lothar Altschmidt, Habib Jan, Christian Klukas, Gunhild Leckband, Rhonda C. Meyer, Zeljko Micic, David Riewe, Rod Snowdon, Michael Ulrich, Thomas Altmann
(Halle-Wittenberg)
- 61a **Serine biosynthesis on the branch between primary and secondary metabolism**
Ruben Maximilian Benstein, Sabine Wulfert, Ulf Ingo Flügge, Stephan Krueger
(Köln)
- 62b • **Investigation of stress and the trophic state on redirection of OPPP enzymes to peroxisomes**
Hannes Lansing, Marie-Christin Lutterbey, Antje von Schaewen
(Münster)
- 63c **Genetic evidence for the involvement of peroxidase in the establishment of apoplastic diffusion barriers**
Mathias Brands, Katharina Markus, Christopher Millan Hidalgo, Lukas Schreiber, Rochus Franke
(Bonn)
- 64a • **Modelling of seed architecture and metabolism in *Brassica napus* using isotope labelling and NMR technologies**
Christina König, Hardy Rolletschek, Ljudmilla Borisjuk, Eberhard Munz, Nicolas Heinzl
(Gatersleben)

65b *Arabidopsis thaliana* seed colour mutants — useful tools to dissect flavonoid biosynthesis

Martin Sagasser, Bernd Weisshaar
(Bielefeld)

Cell Biology

66c • Characterization of Kinesin light chain related proteins and their interaction with IQ domain protein family

Dipannita Mitra
(Halle-Wittenberg)

67a • Plant kinesin light chain-related proteins: Functional subunits of kinesins?

Pratibha Kumari
(Halle-Wittenberg)

68b • Analysis of chloroplast signal recognition particle (SRP) subunits in *Physcomitrella patens*

Dominik Ziehe, Chantal Träger, Marc Nowaczyk, Danja Schünemann
(Bochum)

69c Kinesin-12 POKs are required for division site maintenance

Sabine Müller
(Tübingen)

Hormones

70a • Jasmonates and ethylene in anther dehiscence and pollen release of tomato

Ramona Schubert, Lea von Sivers, Susanne Dobritsch, Bettina Hause
(Halle-Wittenberg)

71b • Overexpression of bacterial halogenases in *Arabidopsis thaliana*

Antje Walter, Jutta Ludwig-Müller
(Dresden)

RNA Biology

- 72c • **Cultivation of embryo lethal *Arabidopsis thaliana* RNA editing mutants**

Matthias Burger, Mizuki Takenaka
(Ulm)

- 73a • **Screening for novel RNA editing factors via virus induced gene silencing in *Arabidopsis thaliana***

Sascha Haag, Mizuki Takenaka
(Ulm)

Technical Advances

- 74b • **Tocopherol production in a new modular compartmented hairy root bioreactor**

Sabine Jülke, Joachim Püschel, Thomas Bley, Jutta Ludwig-Müller
(Dresden)

- 75c • **Highly efficient heritable plant genome engineering using Cas9 orthologues from *Streptococcus thermophilus* and *Staphylococcus aureus***

Jeannette Steinert, Simon Schiml, Friedrich Fauser, Holger Puchta
(Karlsruhe)

- 76a • **Tools and Tips for Genome Editing in dicot Plants**

Jana Ordon, Johannes Gantner, Johannes Stuttmann
(Halle-Wittenberg)

- 77b • **NuGGET: Implementation of a novel EMS Maize population - Mutant screening, phenotyping and rapid mapping -**

Marc Heuermann, Mario Rosso, Henning Tschiersch, Martin Mascher, Uwe Scholz, Lothar Altschmied, Ronny Brandt, Christian Klukas, Michael Ulrich, Milena Ouzunova, Daniela Scheuermann, Thomas Presterl, Thomas Altmann
(Halle-Wittenberg)